

#BadhoBefikar



# UNPARALLELED BRAKING COMFORT BRAKE LINING

100% Asbestos free.  
Reinforced with Kevlarpulp



# BRAKE LININGS TECHNICAL DATA



## RANGE OF APPLICATION

Drum brake lining for ware transportation vehicles braking system equipping. (trucks, trailers, etc) and passenger vehicles (buses, coaches, etc)



## MATERIAL DESCRIPTION

Asbestos free, ecological friction material, with efficient braking and good wear characteristics.  
Composition: Kewlar Pulp, St. Phinolic Resin, Calcined Petroleum Cock, Glass Chopped Stand observing actual valid regulation requirement for environment and working safety conditions.

## WORKING CONDITIONS

Operating maximum temperature

Continuous application	300° C
Short time application	350° C

Maximum working pressure

There are no restrictions for using of friction material concerning to varied climate zones.

## OPERATING FEATURES

Friction:

Minimum	0.30
Maximum	0.45
Wear intensity	max. 0.25 cm <sup>3</sup> //kwh

## PHISICO - MECHANICAL FEATURES

Density	1.75 to 2.1 g/ cm <sup>3</sup>
Rockwell Hardness L Scale	75 to 115
Cross Breaking Strength	Min. 35 N/mm <sup>3</sup>
Loss of Ignition	35 to 45 %

## FEATURES:

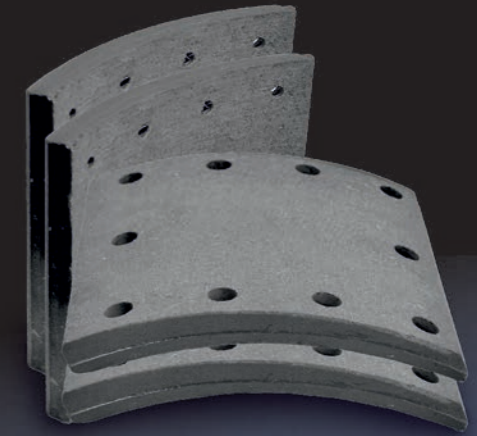
- ✦ Stable co-eff of friction
- ✦ Less heat swell
- ✦ Lower loss of ignition
- ✦ 100% curing to stabilize the braking parameters

## ADVANTAGES:

- ✦ Smooth and comfortable operation
- ✦ Less wear
- ✦ Reduce running cost
- ✦ Efficient braking at all speed

## BENIFTS:

- ✦ Noise free
- ✦ Better service life
- ✦ Longer life for both drum and lining
- ✦ Maximum braking efficiency



## BRAKE LINING APPLICATION CHART

Sr. No.	Cummins Part No.	Brake Pad Part No	Size	Application
Suitable for TATA				
1	AX1016839	TS1	STD	TATA 1510/1612/2515/3516/4018 - Front
2	AX1016840	TS1	I O/S	TATA 1510/1612/2515/3516/4018 - Front
3	AX1016841	TS1	II O/S	TATA 1510/1612/2515/3516/4018 - Front
4	AX1016842	TS2	STD	TATA 1510/1612/2515/3516/4018 - Rear
5	AX1016843	TS2	I O/S	TATA 1510/1612/2515/3516/4018 - Rear
6	AX1016844	TS2	II O/S	TATA 1510/1612/2515/3516/4018-Rear

Each AX part no is a set of 4 brake linings

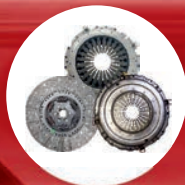
Sr. No.	Cummins Part No.	Brake Pad Part No	Size	Application
7	AX1016845	TPRM	STD	TATA PRIMA -Rear
8	AX1016846	TPRM	I O/S	TATA PRIMA -Rear
9	AX1016847	TPRM	II O/S	TATA PRIMA -Rear
10	AX1016848	WTP1	STD	TATA MARCOPOLO BUS -Front
11	AX1016849	WTP1	I O/S	TATA MARCOPOLO BUS -Front
12	AX1016850	WTP1	II O/S	TATA MARCOPOLO BUS -Front
13	AX1016851	WTP2	STD	TATA MARCOPOLO BUS -Rear
14	AX1016852	WTP2	I O/S	TATA MARCOPOLO BUS -Rear
15	AX1016853	WTP2	II O/S	TATA MARCOPOLO BUS -Rear
16	AX1016854	T 407 1&2	STD	TATA 407 Front & Rear
17	AX1016855	T 407 1&2	I O/S	TATA 407 Front & Rear
18	AX1016856	T 407 1&2	II O/S	TATA 407 Front & Rear
19	AX1016857	T 608 1&2	STD	TATA 608 Front & Rear
20	AX1016858	T 608 1&2	I O/S	TATA 608 Front & Rear
21	AX1016859	T 608 1&2	II O/S	TATA 608 Front & Rear
22	AX1016860	T 709 1&2	STD	TATA 709 Front & Rear
23	AX1016861	T 709 1&2	I O/S	TATA 709 Front & Rear
24	AX1016862	T 709 1&2	II O/S	TATA 709 Front & Rear
25	AX1016863	T 909 1&2	STD	TATA 909 EX Front & Rear
26	AX1016864	T 909 1&2	I O/S	TATA 909 EX Front & Rear
27	AX1016865	T 909 1&2	II O/S	TATA 909 EX Front & Rear
28	AX1016866	T 1109 1&2	STD	TATA 1009/1109 Front & Rear
29	AX1016867	T 1109 1&2	I O/S	TATA 1009/1109 Front & Rear
30	AX1016868	T 1109 1&2	II O/S	TATA 1009/1109 Front & Rear
				<b>Suitable for ASHOK LEYLAND</b>
31	AX1016869	SM 1&2	STD	LEYLAND COMET 5" (127mm) Roller Follower - Front
32	AX1016870	SM 1&2	I O/S	LEYLAND COMET 5" (127mm) Roller Follower - Front
33	AX1016871	SM 1&2	II O/S	LEYLAND COMET 5" (127mm) Roller Follower - Front
34	AX1016872	SM 3&4	STD	LEYLAND COMET 7" (177.8mm) Roller Follower - Rear
35	AX1016873	SM 3&4	I O/S	LEYLAND COMET 7" (177.8mm) Roller Follower - Rear
36	AX1016874	SM 3&4	II O/S	LEYLAND COMET 7" (177.8mm) Roller Follower - Rear
37	AX1016875	SM 3&4-HLP	STD	LEYLAND COMET 7" HLP (177.8mm) Roller Follower - Rear
38	AX1016876	SM 3&4-HLP	I O/S	LEYLAND COMET 7" HLP (177.8mm) Roller Follower - Rear
39	AX1016877	SM 3&4-HLP	II O/S	LEYLAND COMET 7" HLP (177.8mm) Roller Follower - Rear
40	AX1016878	SM 7&8	STD	LEYLAND COMET 6" ( 152.4mm) Front
41	AX1016879	SM 7&8	I O/S	LEYLAND COMET 6" ( 152.4mm) Front
42	AX1016880	SM 7&8	II O/S	LEYLAND COMET 6" ( 152.4mm) Front
43	AX1016881	SM 7&8-HLP	STD	LEYLAND COMET 6" HLP ( 152.4mm) Front
44	AX1016882	SM 7&8-HLP	I O/S	LEYLAND COMET 6" HLP ( 152.4mm) Front
45	AX1016883	SM 7&8-HLP	II O/S	LEYLAND COMET 6" HLP ( 152.4mm) Front
46	AX1016884	SM 10&11-HLP	STD	LEYLAND COMET 8" HLP 12 Meter Bus - Rear

**Each AX part no is a set of 4 brake linings**

Sr. No.	Cummins Part No.	Brake Pad Part No	Size	Application
47	AX1016885	SM 10&11-HLP	I O/S	LEYLAND COMET 8" HLP 12 Meter Bus - Rear
48	AX1016886	SM 10&11-HLP	II O/S	LEYLAND COMET 8" HLP 12 Meter Bus - Rear
				<b>Suitable for EICHER</b>
49	AX1016839	TS1	STD	EICHER JUMBO 2016, Pro E2 plus, 1114,1516, 2015, 3015, 3025, 3531, 2016, 1114F Front
50	AX1016840	TS1	I O/S	EICHER JUMBO 2016, Pro E2 plus, 1114,1516, 2015, 3015, 3025, 3531, 2016,1114F Front
51	AX1016841	TS1	II O/S	EICHER JUMBO 2016, Pro E2 plus, 1114,1516,2015,3015, 3025, 3531, 2016, 1114F Front
52	AX1016842	TS2	STD	EICHER JUMBO 2016, Pro E2 plus, 1114,1516, 2015, 3015, 3025, 3531, 2016, 1114F Rear
53	AX1016843	TS2	I O/S	EICHER JUMBO 2016, Pro E2 plus, 1114,1516, 2015, 3015, 3025, 3531, 2016, 1114F Rear
54	AX1016844	TS2	II O/S	EICHER JUMBO 2016, Pro E2 plus, 1114,1516, 2015, 3015, 3025, 3531, 2016, 1114F Rear
55	AX1016845	TPRM	STD	EICHER 25 TONNER - Rear
56	AX1016846	TPRM	I O/S	EICHER 25 TONNER - Rear
57	AX1016847	TPRM	II O/S	EICHER 25 TONNER - Rear
58	AX1016860	T 709 1&2	STD	EICHER 10.90 Front & Rear
59	AX1016861	T 709 1&2	I O/S	EICHER 10.90 Front & Rear
60	AX1016862	T 709 1&2	II O/S	EICHER 10.90 Front & Rear
61	AX1016863	T 909 1&2	STD	EICHER 10.95 Front & Rear
62	AX1016864	T 909 1&2	I O/S	EICHER 10.95 Front & Rear
63	AX1016865	T 909 1&2	II O/S	EICHER 10.95 Front & Rear
64	AX1016866	T 1109 1&2	STD	EICHER Pro E2 Plus, 1110, 1112
65	AX1016867	T 1109 1&2	I O/S	EICHER Pro E2 Plus, 1110, 1112
66	AX1016868	T 1109 1&2	II O/S	EICHER Pro E2 Plus, 1110, 1112
				<b>Suitable for SWARAJ</b>
67	AX1016860	T 709 1&2	STD	SWARAJ SAMRAT - Front & Rear
68	AX1016861	T 709 1&2	I O/S	SWARAJ SAMRAT - Front & Rear
69	AX1016862	T 709 1&2	II O/S	SWARAJ SAMRAT - Front & Rear
				<b>Suitable for FORCE MAN</b>
70	AX1016887	4515-12H	STD	FORCE MAN 12 HOLE YORK, DYSON WVA#19036/19037
71	AX1016888	4515-12H	I O/S	FORCE MAN 12 HOLE YORK, DYSON WVA#19036/19037
72	AX1016889	4515-12H	II O/S	FORCE MAN 12 HOLE YORK, DYSON WVA#19036/19037
73	AX1016890	4515-16H	STD	FORCE MAN 16 HOLE YORK, DYSON WVA#19036/19037
74	AX1016891	4515-16H	I O/S	FORCE MAN 16 HOLE YORK, DYSON WVA#19036/19037
75	AX1016892	4515-16H	II O/S	FORCE MAN 16 HOLE YORK, DYSON WVA#19036/19037
				<b>Suitable for AMW</b>
76	AX1016893	AMW 14H	STD	AMW 4018 TRUCK - Rear
77	AX1016894	AMW 14H	I O/S	AMW 4018 TRUCK - Rear
78	AX1016895	AMW 14H	II O/S	AMW 4018 TRUCK - Rear
79	AX1016896	AMW 6&10H	STD	AMW 4018 TRUCK - Front
80	AX1016897	AMW 6&10H	I O/S	AMW 4018 TRUCK - Front
81	AX1016898	AMW 6&10H	II O/S	AMW 4018 TRUCK - Front

**Each AX part no is a set of 4 brake linings**

# Products available for On-Highway segment



Clutches



Automotive  
Batteries



Coolants



Engine Parts



AIRShield DEF



Filters



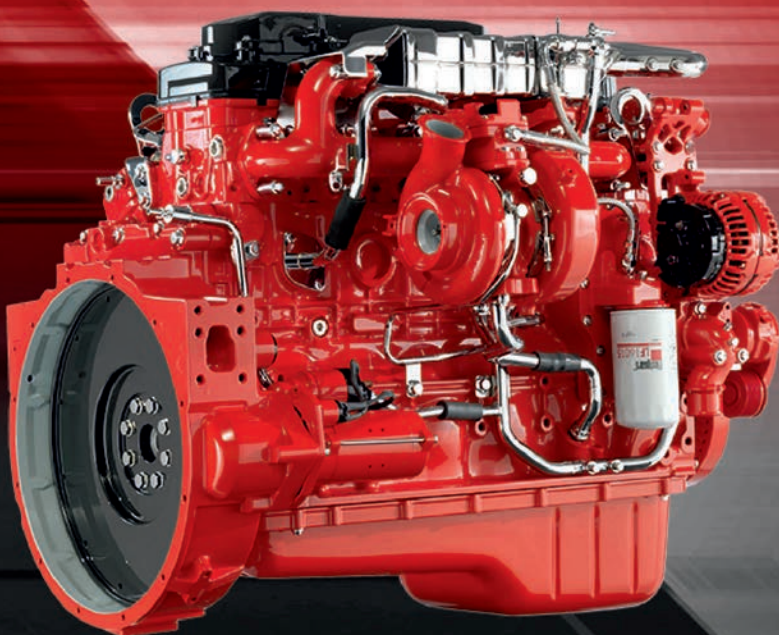
Long Block



Components



Braking Range



## Cummins India Limited

Cummins India Office Campus,  
Tower A, 3rd Floor, Survey No.21,  
Balewadi, Pune - 411045 (MH)

Toll free No.:1-800-210-2525  
Email ID: [care.india@cummins.com](mailto:care.india@cummins.com)