



Genuine Cummins Cylinder Head

#BadhoBefikar



Cylinder head sits above the cylinders and forms the roof of the combustion chamber. It contains inlet and exhaust passages, coolant passages, valves, camshafts and fuel injectors.



Features

- Carefully selected material composition (molly / non-molly cast iron) based on application
- Accurate cylinder head design with optimised water jackets through Analysis Led Design
- Accurate surface finish and flatness during machining
- Robust Quality Control on features of casting



Advantages

- Capability to withstand high temperatures - 673K (400 °C)
- High fatigue strength of 172 bar
- Lowers head and valve temperature
- Avoids fault codes related to high temperature
- Secured sealing
- Avoids gas leakage during combustion
- Controls surface waviness
- No failures due to core shift, porosity



Benefits

- Improved durability
- Demonstrated life of more than 7 lakhs km
- Uninterrupted vehicle performance
- Improved fuel efficiency
- Increased durability of Cylinder head and Valves

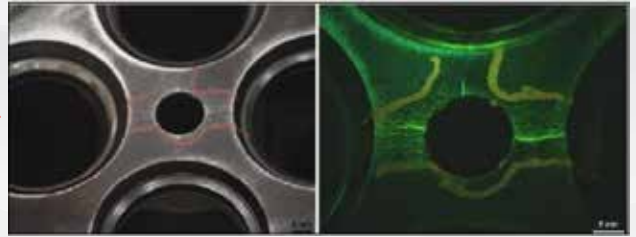


Risks of Non-genuine Parts

› Cylinder head combustion face crack



› Cracks between Injector bore and valves insufficient coolant flow



- Risk of valve scuffing leading to valve train failure (**Major Overhaul**)
- Performance impact (**lower power and torque**) and risk of valve failures
- Frequent service interval leading to more **unplanned downtime**



Why use Genuine Cummins Parts



Demonstrated life of more than 7 lakhs km

3500+ hours of cumulative testing done to ensure premium quality of Genuine Cummins parts

Developed through Analysis Led Design

Compatible with Cummins valve seat insert and valve train considering thermal and dynamic performance



Cummins India Limited

Cummins India Office Campus, Tower A, 3rd Floor,
Survey no. 21, Balewadi, Pune - 411045 (MH)

Toll free no.: 1-800-210-2525

Email ID: care.india@cummins.com